

NIMBUS CREDENZA

The Nimbus credenza is a functional and modern storage solution for meeting and boardrooms. It's equally suitable for areas which aren't necessarily client-facing. It combines well with our Nimbus table range and can be matched with the same finish.

Available in MFC, Laminate and Veneer.

Option for mitered corners when choosing a veneer finish.

Available with 2, 3 or 4 doors.

Choice of leg or plinth base.

Option for back-painted glass tops, wine cooler and fridge.

Option for touch latch or polished handles.



British Design



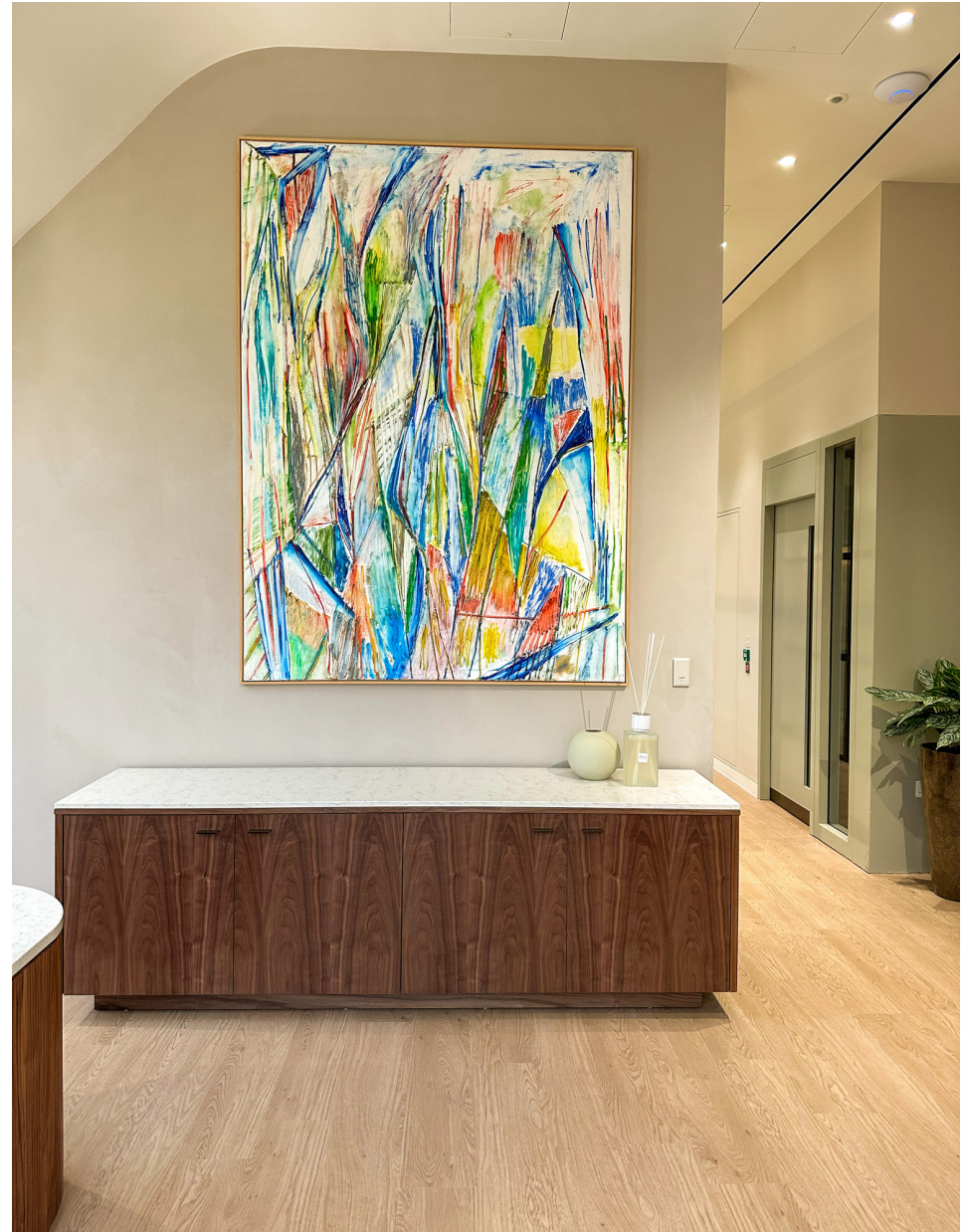
British Made



10 year guarantee



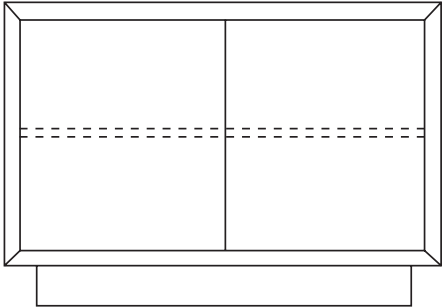
Family of products



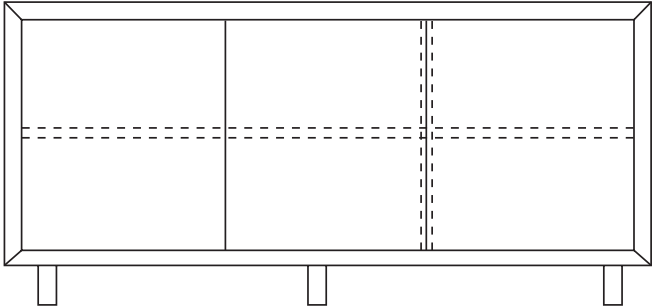
NIMBUS CREDENZA

Dimensions (in mm)

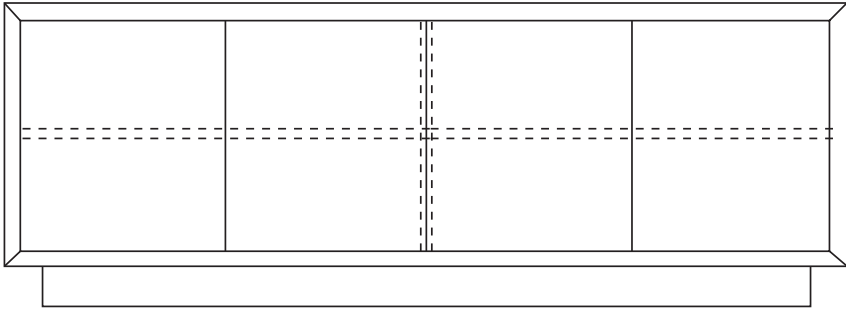
1065 x 550 x 750
Leg or Plinth base



1565 x 550 x 750
Leg or Plinth base



2065 x 550 x 750
Leg or Plinth base



MFC & FENIX (non-mitred joint)	Veneer (mitred joint)
<p>A line drawing of a credenza with two doors and a plinth base, showing a non-mitred joint. The doors are separated by a vertical dashed line. The plinth base is a simple rectangular block.</p>	<p>A line drawing of a credenza with two doors and a plinth base, showing a mitred joint. The doors are separated by a vertical dashed line. The plinth base is a simple rectangular block.</p>

NIMBUS CREDENZA



NIMBUS CREDENZA



NIMBUS CREDENZA

