

MIR

Designed by Mark Gabbertas, MIR is exceptional public area modular seating. Combine hubs, stools and benches in various ways to create your own flexible soft seating breakout area. These configurations can be accompanied by the aluminium table, absolutely suited to notebook and laptop use or for resting drinks.

MIR is ideal for use in spaces where people gather in numbers; hotel foyers, transit lounges, student spaces and atria of all kinds. There are three lengths of MIR bench. All are fully upholstered and spaced off the floor by discreet, powder coated, steel feet with nylon glides.

MIR offers the designer full rein in creating different configurations of layout and the opportunity to play with fabric colour on the different elements.



British Design



British Made



10 year guarantee



Upholstery options



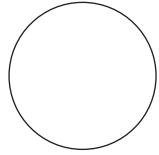
MIR

Dimensions (in mm)

Hub units without backrest

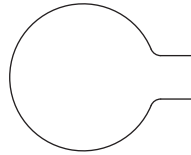
MR/H

width **1500**
height **450**



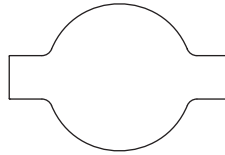
MR/H1

width **1880**
depth **1500**
height **450**



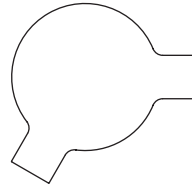
MR/H2IL

width **2250**
depth **1500**
height **450**



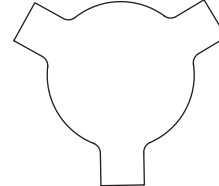
MR/H2OS

width **1880**
depth **1835**
height **450**



MR/H3

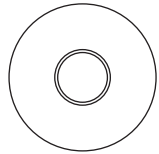
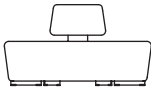
width **2170**
depth **1880**
height **450**



Hub units with backrest

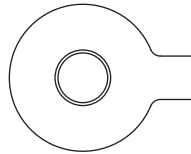
MR/H/BR

height **825**



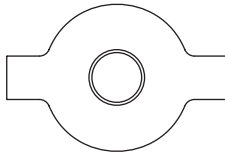
MR/H1/BR

height **825**



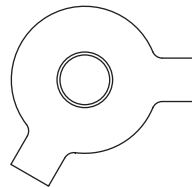
MR/H2IL/BR

height **825**



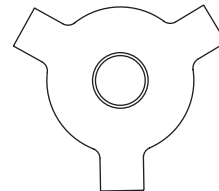
MR/H2OS/BR

height **825**

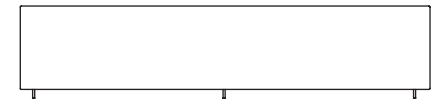
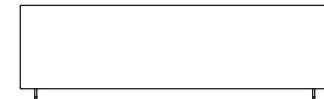
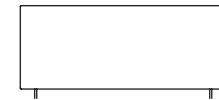
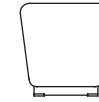


MR/H3/BR

height **825**

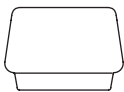


Benches

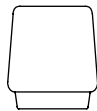


Benches

width **1000 / 1500 / 2000**
depth **440**
height **450**



Stool
width **570**
height **400**



Stool
width **450**
height **500**

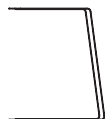
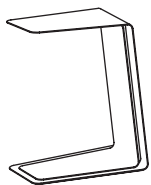
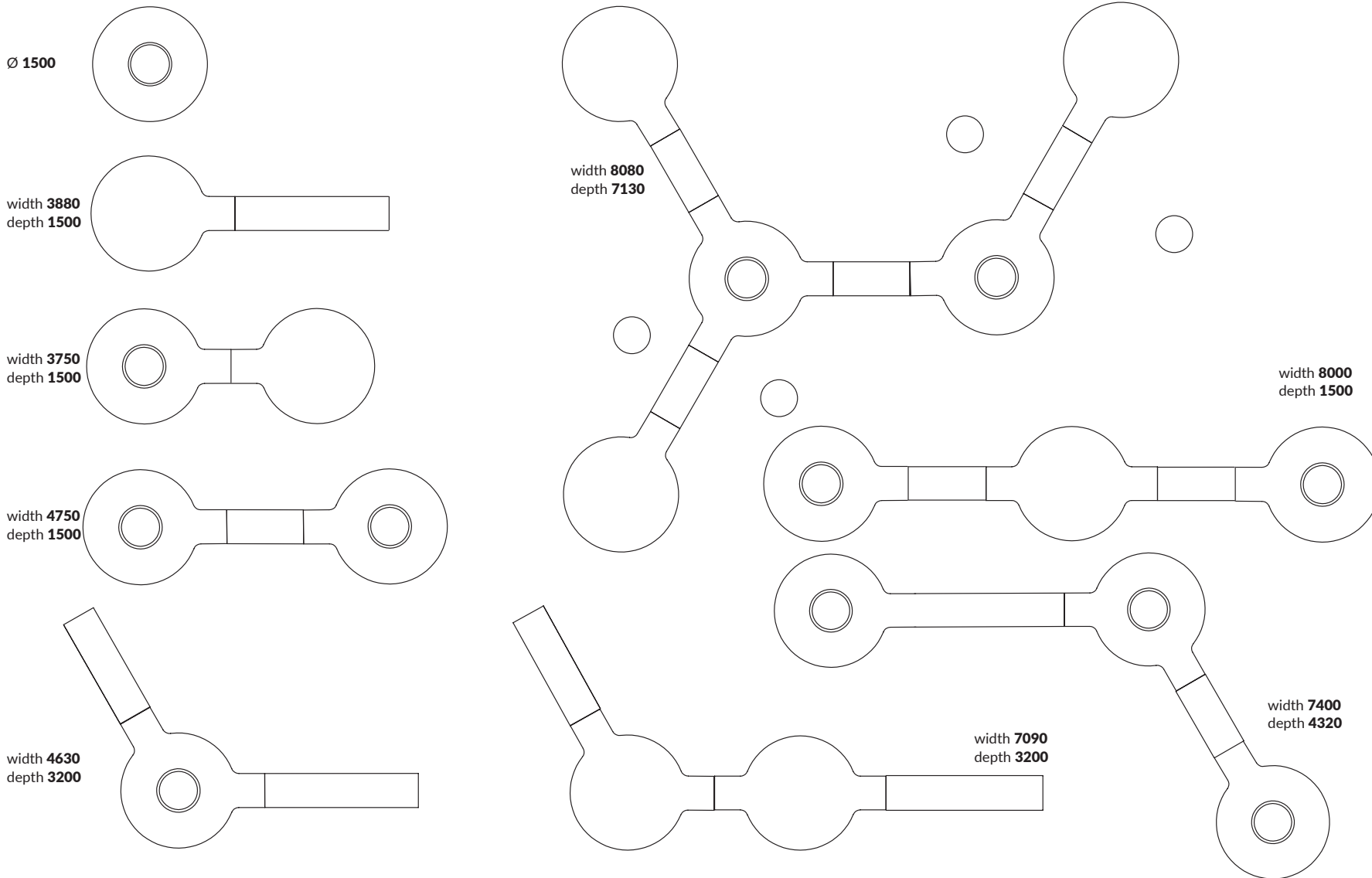


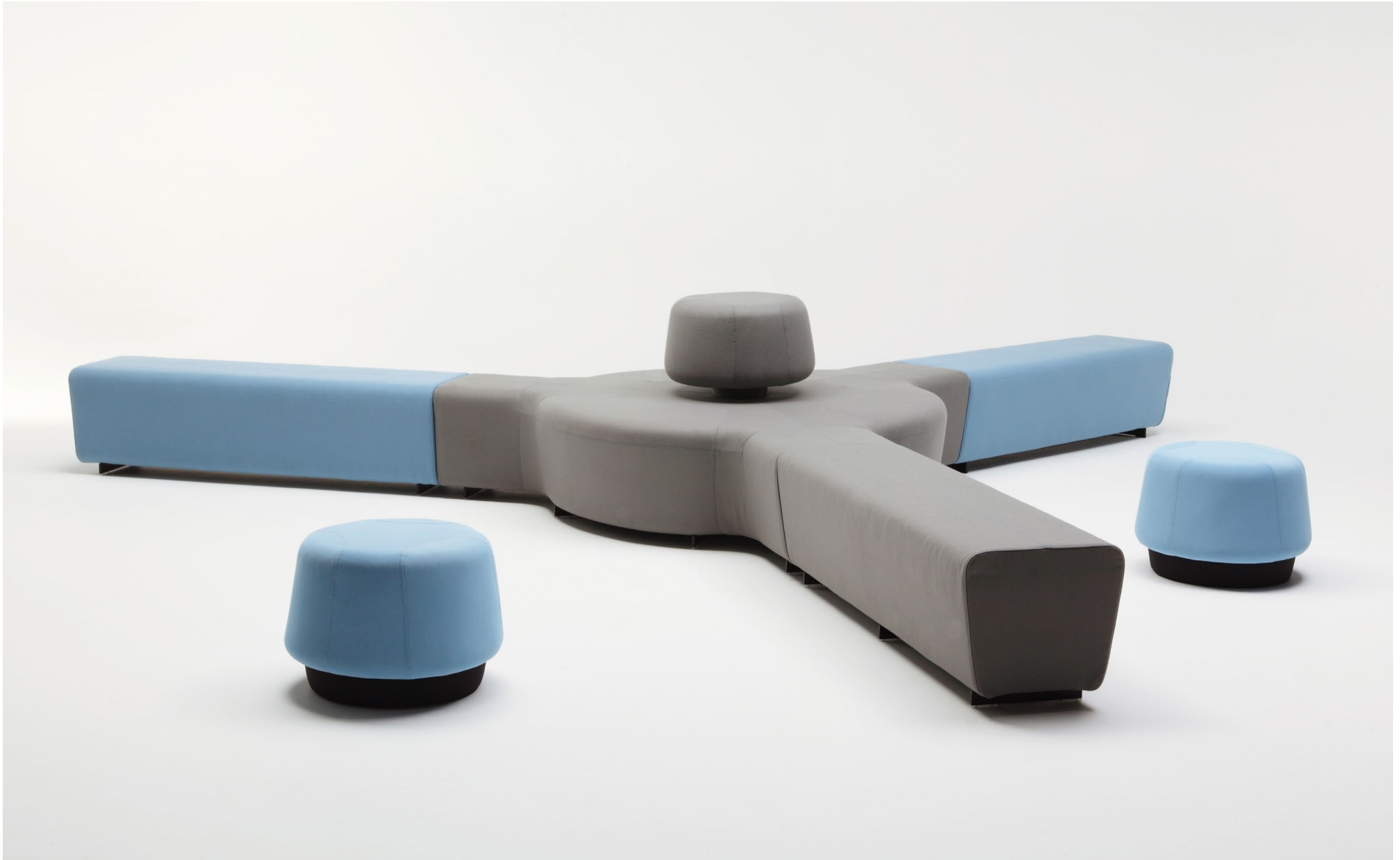
Table
width **320**
height **600**
depth **510**

MIR

Dimensions (in mm)



MIR



MIR



MIR



MIR





MIR

