

# DOTTY

Formality doesn't follow function with our funky new cable-tidy, Dotty! Choose your own fabric and buttons combination to create a cable-tidy like no other. Go for all fabric buttons, all wooden buttons or half and half. If you're feeling really brave, take a gamble with our 'Random' option and we'll choose the fabrics and buttons for you.



British Design



British Made



10 year guarantee

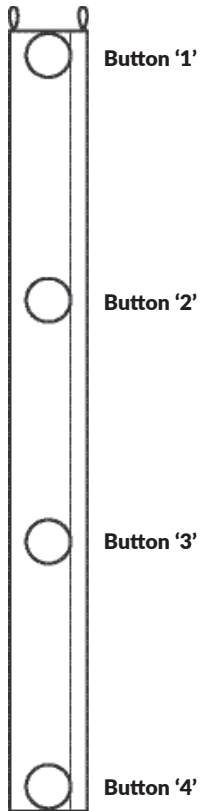


Upholstery options



# DOTTY

Height = 715mm



## Standard Sleeve Fabrics



Camira Gravity  
Navy Blue CPC30  
Navy Blue



Camira Gravity  
Dove CPC17  
Grey

## Standard Button Fabrics



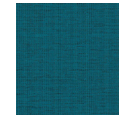
Camira Gravity  
Navy Blue CPC30  
Navy Blue  
'A'



Camira Gravity  
Dove CPC17  
Grey  
'B'



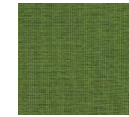
Camira Gravity  
Sunni CPC20  
Yellow  
'C'



Camira Gravity  
Botanic CPC06  
Blue  
'D'



Camira Gravity  
Tulip CPC25  
Red  
'E'



Camira Gravity  
Fresh CPC23  
Green  
'F'

## Wooden Buttons



Wooden buttons are stitched with bright orange thread as standard. The stitch will alternate with each button between cross stitch and parallel stitch.

# DOTTY



# DOTTY

---

